

Solo-Dex<sup>®</sup>  
 Fascile<sup>®</sup>  
 Continuous Peripheral  
 Nerve Block Products

*Fast Simple Reliable - Stays in Place.*



**Solo-Dex<sup>®</sup> Fascile<sup>®</sup>**

*Distinctively maneuverable.  
 Continuous personal control of  
 ultrasound visualization,  
 the catheter and medication.*

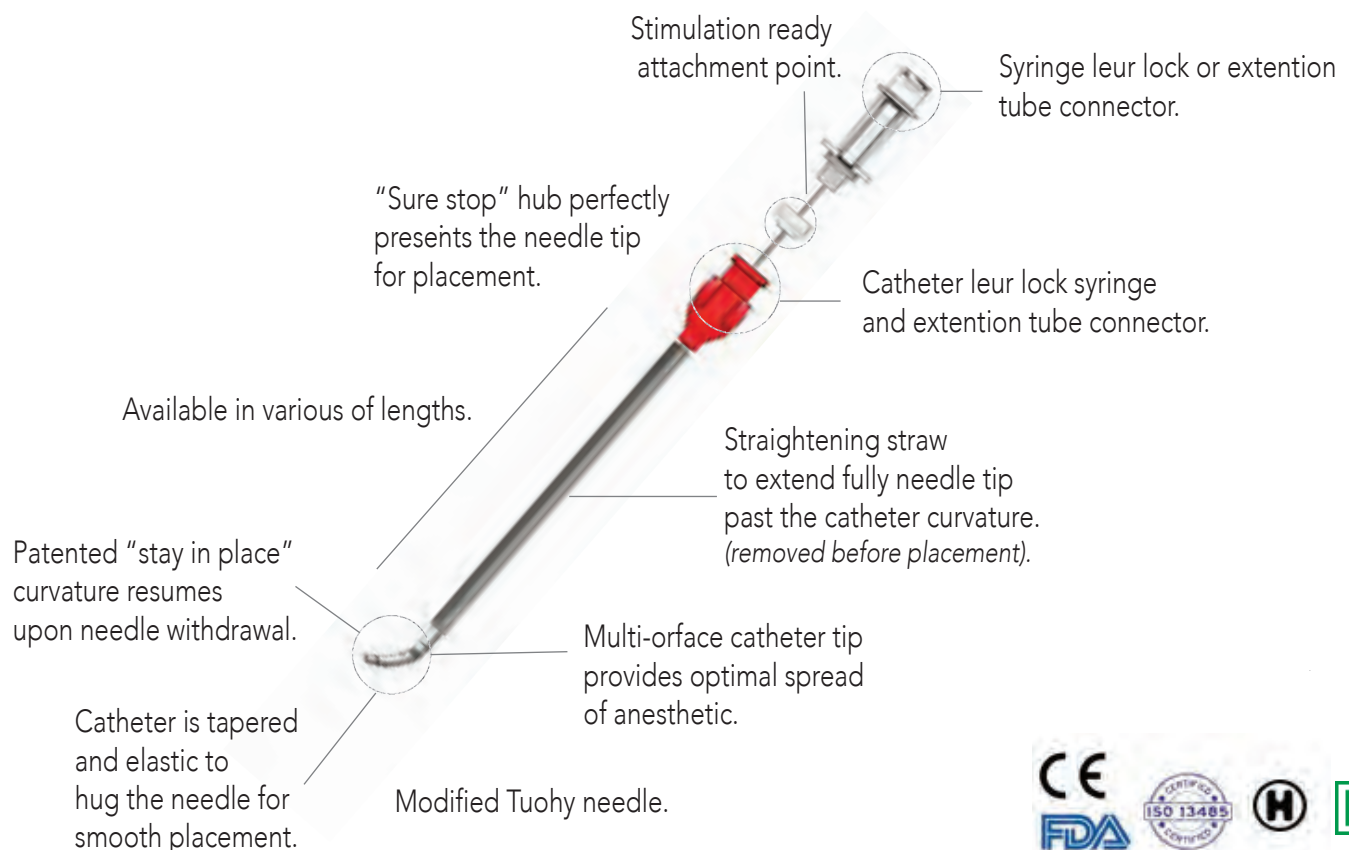


*Continuous acute pain management  
 for 5 days with  
 single shot,  
 single operator placement.*

# The Solo-Dex Fascile<sup>®</sup> Advantage

## Solo-Dex<sup>®</sup> Fascile<sup>®</sup> Continuous Nerve Block Catheter

Overall nerve block success is defined by precise, sustainable and regulatable control of patient pain. Single operator control of visualization, catheter and medication inspires confident and successful placement of continuous peripheral nerve blocks. The Fascile<sup>®</sup> Continuous Peripheral Nerve Block (cPNB) from Solo-Dex<sup>®</sup>\* provides exquisit control, reduces complexity and unlocks the more successful outcomes. Fascile simply stays where it is placed.



\* See IFU for complete instructions.

# The Solo-Dex Fascile® Advantage

## Fast Simple Reliable cPNB placement

*Precision Fascile® catheters deliver medication when and where needed with the reliability you would expect from features optimized by clinicians. The Solo-Dex Fascile catheter is placed quickly with confidence because it is echogenic, uncomplicated, and supported by smooth penetration characteristics and outstanding visibility and a modified Touhy tip needle. A stimulator attachment clip is available for optional nerve stimulation. The clinician is always in direct personal control ensuring an effective, lasting and precise nerve block.*

## Smooth insertion, stays in place.

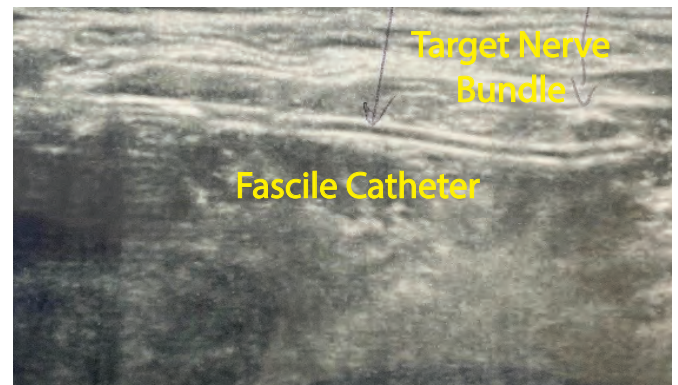
*Fascile's patented single shot, multi-orifice catheter is tapered to tightly hug a Tuohy needle. When the needle is withdrawn, the catheter gently curves, holding the catheter securely in place. Fascile catheter entry provides a resilient seal reducing infection, leakage and dislodgement. Fascile is designed to reduce or eliminate catheter failure in the hospital, in the clinic or during extended home recovery.*

## Consistently Efficient

*Fascile cPNB placement is similar to a nerve block injection. A recent study demonstrated that the placement of a Solo-Dex Fascile nerve block catheter did not require significantly more time than a single injection block\*. Patented Solo-Dex catheter-over-the-needle technology significantly reduces the challenges that have encumbered cPNB placement for many clinicians.*



**A Solo-Dex Fascile catheter placed with a single operator in a single shot.** Pictured above is a 4FR X 70 mm catheter locked to a 10 ml syringe.

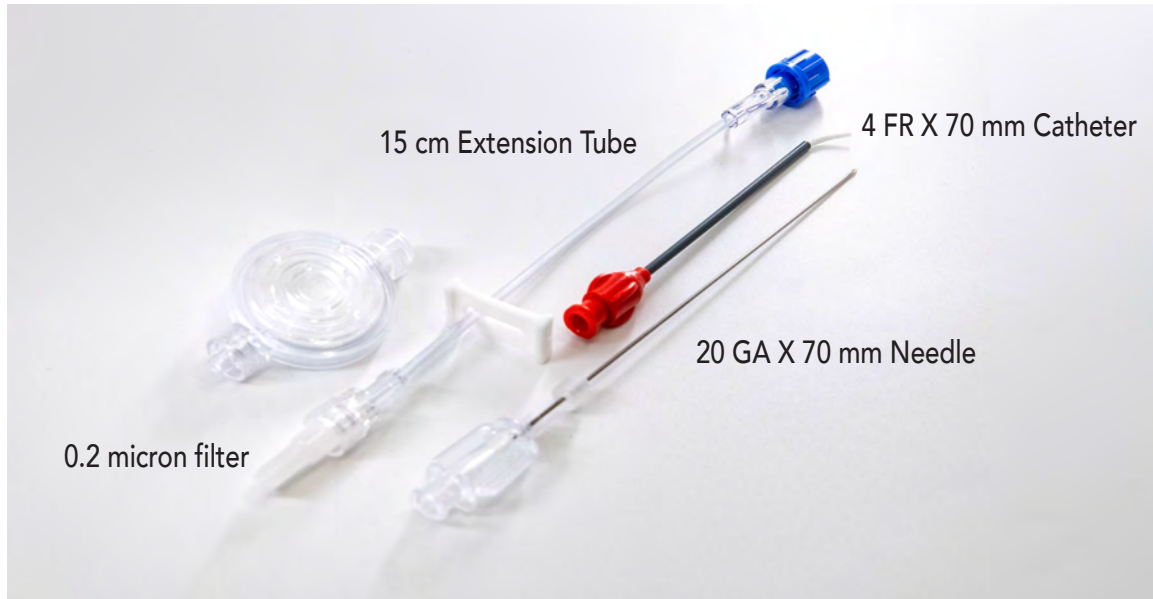


**Solo-Dex Fascile catheters are echogenic.** Pictured above is a 4FR X 70 mm catheter only (without needle) in a human patient with conventional ultrasound visualization.

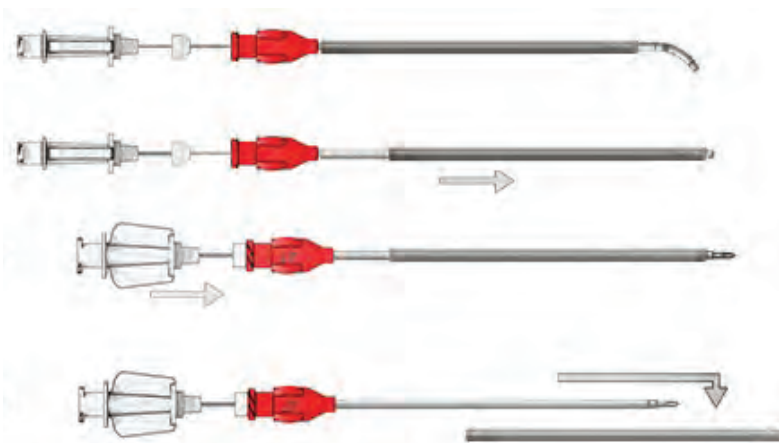
\* Presentation: February 2020 Meeting of American Society of Regional Anesthesia; J. Loyd, A. Smorada, N. Clenden, J. Armstrong 45th Annual Regional Anesthesiology & Acute Pain Medicine.

# Fascile Mini Kit Contents

## Fascile<sup>®</sup> Catheter Over the Needle cPNB Mini Kit Components



## Fascile<sup>®</sup> Catheter Over the Needle cPNB Mini Kit Preparation



Catheter is packaged with a straightening straw and a needle partially inserted.

Straw is extended to straighten the catheter for full extension of the needle.

Assembly is checked for proper needle deployment prior to removal of straw. Needle will protrude from the distal end three millimeters.

Straw is removed and discarded and catheter is ready for use

**Virtual Patent Marking**

Protected by one or more patents; patents pending.  
 This catalogue is provided to satisfy the virtual patent marking provisions of various jurisdictions including the virtual patent marking provisions of the America Invents Act and provide notice under 35 U.S.C. § 287 (a).  
 This list of products and patents may not be all inclusive.  
 For example, some products listed here may be covered by patents in the United States and elsewhere that are not listed, and other products not listed here may be protected by one or more patents in the United States and elsewhere.

For more information about Solo-Dex continuous Peripheral Nerve Block Catheters, including Fascile Related Products, please visit: [www.solo-dex.com](http://www.solo-dex.com) or email: [info@solo-dex.com](mailto:info@solo-dex.com).



# Ordering Information

## Solo-Dex® Fascile® Products

### Fascile® Catheter Over the Needle cPNB Mini Kits

| Product Number          | Catheter FR X mm | Needle Gauge | Needle Bevel   | Stimulation | Extension & Filter | Shipping per box | Shipping per case |
|-------------------------|------------------|--------------|----------------|-------------|--------------------|------------------|-------------------|
| SKU 500014              | 4FR X 70mm       | 20 GA        | Modified Tuohy | Ready       | 15cm / 2 micron    | 10 units         | 100 units         |
| SKU 500020              | 4FR X 100mm      | 20 GA        | Modified Tuohy | Ready       | 15cm / 2 micron    | 10 units         | 100 units         |
| SKU 500025              | 4FR X 100mm      | 20 GA        | Modified Tuohy | Ready       | 50cm / 2 micron    | 10 units         | 100 units         |
| SKU 500027 <sup>1</sup> | 4FR X 100mm      | 20 GA        | Modified Tuohy | N/A         | 50cm / 2 micron    | 10 units         | 100 units         |
| SKU 500035              | 4FR X 135mm      | 20 GA        | Modified Tuohy | N/A         | 50cm / 2 micron    | 10 units         | 100 units         |

### Fascile® Related Products

| Product Number | Product Description  | Shipping per box | Shipping per case |
|----------------|--|------------------|-------------------|
| SKU 500002     | Fascile Electrical Stimulation Adapter <i>(fits Stimulation Ready Fascile catheters)</i> | 10 units         | 100 units         |
| SKU 500001     | Centurion Sorba View Shield Fixation Device Small 6.35 X 10.16 cm                        | 50 units         | 100 units         |

### Visit Solo-Dex Online:

For information about Solo-Dex continuous Peripheral Nerve Block Catheters, including Fascile Related Products, please visit: [www.solo-dex.com](http://www.solo-dex.com) or email: [info@solo-dex.com](mailto:info@solo-dex.com).



### Product Training:

For information about Solo-Dex continuous Peripheral Nerve Block Catheters, training opportunities please visit: [www.solo-dex.com](http://www.solo-dex.com) or email: [info@solo-dex.com](mailto:info@solo-dex.com).



**SOLODEX**

### To Place an Order

Telephone:  
+1 801.631-7288

Email:  
[Orders@Solo-Dex.com](mailto:Orders@Solo-Dex.com)

Website:  
[www.Solo-Dex.com](http://www.Solo-Dex.com)

Information:  
[Info@Solo-Dex.com](mailto:Info@Solo-Dex.com)

1. Providing maximum stiffness in a 100mm catheter assembly.

